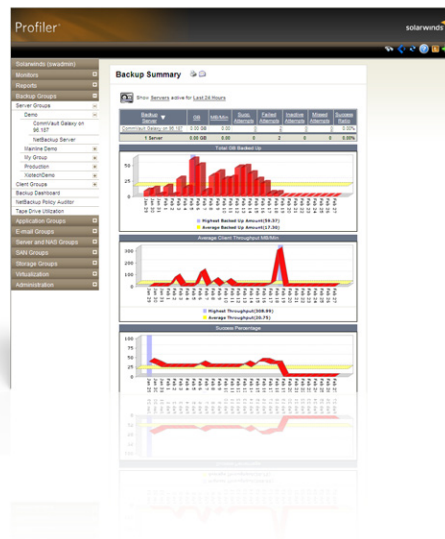




Say Goodbye to Spreadsheets & Scripts! There's a Better Way to Manage Your Data Protection Environment.

SUPPORTS MAJOR BACKUP APPLICATIONS, INCLUDING:

- CA ARCserve®
- EMC® NetWorker®
- IBM® TSM
- Syncsort Backup Express
- Symantec™ Backup Exec™ & NetBackup™
- FalconStor® VTL
- CommVault®
- Quantum®



You need to keep a vigilant eye on your data protection environment, but do you really have time to be a spreadsheet jockey or a scripting geek? Complex spreadsheets and home-grown solutions just don't cut it anymore — you need a solution that gives you real-time, consolidated visibility into the status of your backup operations and that helps prevent failures and loss of critical data.

Backup Profiler allows you to say goodbye to your scripts and spreadsheets and say hello to easy-to-use, centralized backup management software that doesn't break the bank. Forget about the reports from your backup applications that only provide a partial view into your data protection environment. We designed Backup Profiler to work with all major backup

applications, operating systems, and storage technologies. That means you can finally get a consolidated view of all backups across multiple backup servers, and see how they relate to your entire storage network.

Backup Profiler's web-based backup console provides your entire team with a real-time, at-a-glance view of all backup operations. It automatically summarizes backup status, exceptions, and trending of backup size. These functions make it easy for you to plan for growth, to ensure that your backup operations are compliant with regulations and corporate standards, and to prevent failed backups and loss of data.

Backup Profiler Highlights:

- **Continuously monitors your multi-vendor data protection environment** and delivers visibility into the entire backup process
- **Identifies misconfigurations, inefficiencies, and anomalies** before they cause failures
- **Optimizes performance of your backup environment** by providing visibility into device throughput, duration, and more
- **Simplifies capacity planning** by giving you the ability to visualize backup trends and plan for future investments
- **Automates the backup compliance process** and simplifies SLA definition, performance monitoring, and scorecard generation
- **Provides an at-a-glance view of the state of all backup media** in your data protection environment

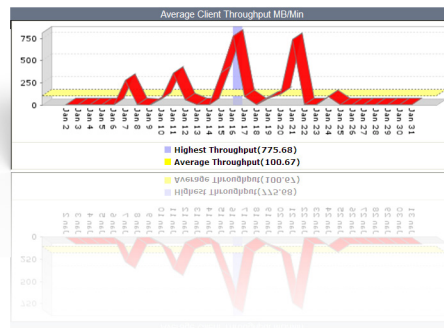
Backup Profiler Features

Backup Monitoring & Backup Reporting

Backup Profiler delivers visibility into the entire backup process, allowing you to proactively manage your data protection environment. If a switch goes down or a cable is pulled out, you'll be alerted to network connectivity problems before the backup is run. Off-the-shelf reports, including post-backup analysis reports and enterprise-level backup comparison reports can save you hours every month. And backup reporting can be easily customized using a report wizard.



Backup Profiler continually monitors the backup environment for misconfigurations, inefficiencies, and anomalies to enhance backup reliability. Without visibility into your comprehensive backup environment, it can be difficult to predict when backups won't complete within their designated window, and oftentimes, you are only notified after these delays have affected larger projects. In the most troubling scenarios, backup processes fail to run and you are caught unaware, having never received notification of the failure. With Backup Profiler, you'll never have to worry about being caught off guard, knowing that you'll receive alerts when problems occur, enabling you to fix them before they contribute to backup failure.



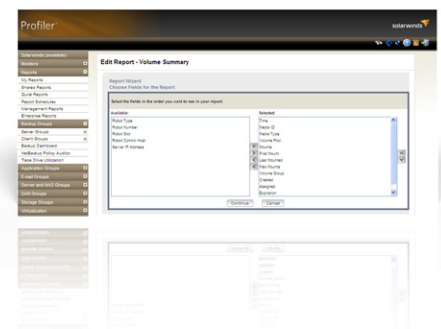
Backup Performance Optimization

Performance problems within data protection systems and processes can have far-ranging effects on your organization's business efficiency. Performance bottlenecks can cause backups to fail altogether or fail to complete within allotted time windows, exposing your organization to risk and resulting in strain on the infrastructure. Backup Profiler not only provides summary reports, but also real-time situational analysis detailing problems with both IT products and operational processes.

Backup Profiler optimizes the performance of your backup environment by providing visibility into areas such as device throughput and duration, ensuring that data is backed up within the required window and providing a chance to fix issues and rerun backups if necessary. Backup Profiler correlates performance and configuration information across backup servers and software, tape libraries and drives, networks, client devices, and storage arrays. This information enables you to uncover infrastructure failures and performance problems across technology domains.

Automated Backup Capacity Planning

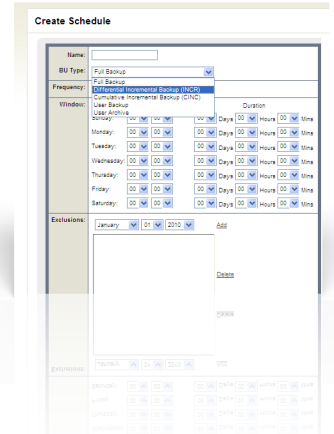
Backup Profiler offers a real-time and historical view of the backup environment. With a few mouse clicks, you can look at trend lines for hundreds of monitored performance values for intervals ranging from as little as six hours to as large as twelve months. Backup Profiler's trending and forecasting capabilities give you the ability to visualize backup trends and plan for future investments in business continuity and disaster recovery resources.



Backup Compliance & SLA Management

Compliance regulations for monitoring, managing, and disclosing operational information and for safeguarding client information continue to grow and become more complicated. Backup Profiler automates the backup compliance process and enables you to provide auditors with a clear picture of backup status, a record of where the data is backed up, and the necessary assurance that data is recoverable.

Backup Profiler uses business-specific details such as backup schedules and retention periods to report on compliance and sends alerts when compliance is threatened.

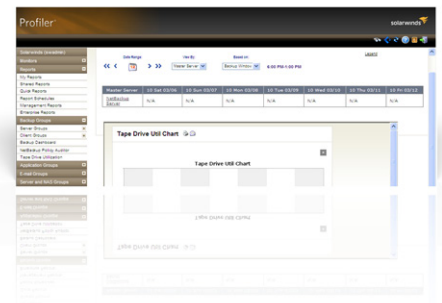


Establishing policies, enabling processes for compliance, and tracking missed backups are all performed from an easy-to-use and intuitive Web-based console. Backup Profiler makes it easy to track missed client schedules and compare what was supposed to be backed up to what was actually backed up.

Backup Profiler even makes it easy to report on user activities without spending hours creating spreadsheets. Get the continuous visibility you need into exactly who has access to what data, who has made what changes, and when those changes were made. Backup Profiler also provides you with tools to define requirements and constraints in service level agreements (SLAs), validate performance against objectives, and generate scorecards.

Backup Media Management

Backup Profiler provides a quick point-in-time snapshot displaying the state of all backup media in your environment. These reports save valuable time by enabling you to see how many tapes were used and how much was backed up by backup job, backup client, backup server, or the entire enterprise (regardless of vendor).



In addition, Backup Profiler gives you immediate insight into where your media is located by reporting on media both inside and outside of the tape library.



Other Profiler Products:

- Virtual & Server Profiler
- Storage Profiler

SYSTEM REQUIREMENTS	
HARDWARE	MINIMUM REQUIREMENTS
Memory	2 GB
Hard Drive	50 GB
SOFTWARE	MINIMUM REQUIREMENTS
Operating System	Windows® 2003/2008 (32 & 64 bit); Redhat® Linux® or SUSE™; Solaris™ 10
Console	Internet Explorer®, Mozilla® Firefox®
NOTE: The requirements listed above are recommendations that vary depending on each network configuration and server load.	