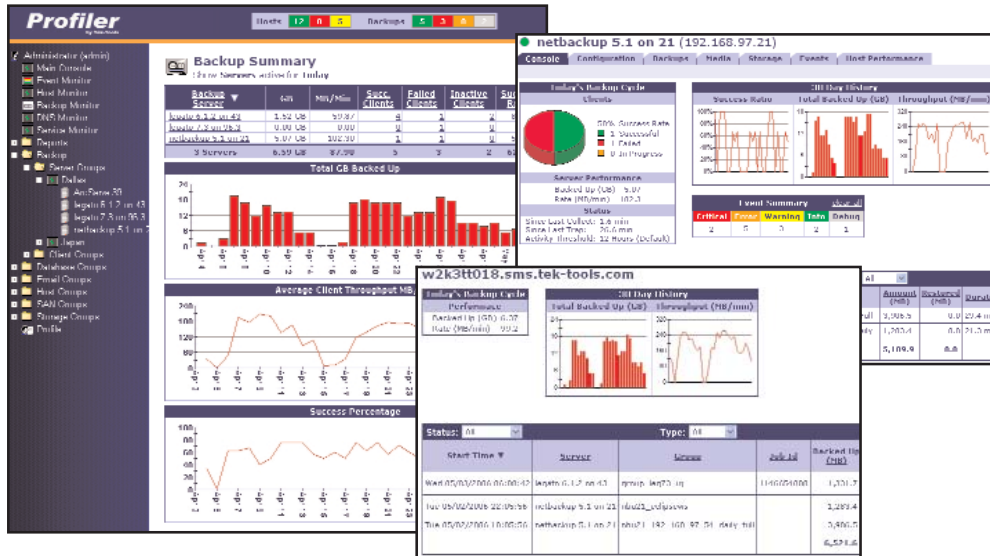


# Backup Profiler

## Backup Exec Module: Eliminate Uncertainty



Monitor the health of multiple backup servers and backup applications with automation and reporting from a centralized console. Improve operational efficiencies by eliminating manual intervention, improve backup success rates, mitigate the risks relative to business recovery, and build a reliable process for meeting compliance requirements.

### KEY FEATURES

- Consolidated View (multiple backup servers)
- Scorecard Summary (success ratio, failed/successful/inactive, throughput amount, amount backed up)
- Backup Error Notification & Event Summary
- Reporting
  - Automated Creation & Distribution (CSV, HTML, Email)
  - Pre-Defined Reports
  - User-Defined Reports
  - Compliance Reports
  - Business Recovery Risk Reports
  - Chargeback
- Trending Analysis
- Backup Window/SLA Analysis
- Virtual Grouping by Device, Platform, Location, Division
- Backup Server Diagnostics & Monitoring

### ADDITIONAL BACKUP EXEC FEATURES

#### Centralized Web Console

Profiler for Backup Exec is a web-based backup reporting and analysis solution providing a consolidated, centralized view of all backups across one or multiple Backup Exec servers in relation to the entire storage network.

#### Real Time Monitoring Provides Quick, Accurate Data

Profiler for Backup Exec offers real time monitoring of all backup jobs as they progress through the backup window. Profiler's enterprise-wide "Backup Console" summarizes the status of backups across the enterprise, including backup status, exceptions, size of backups and trending of backup size.

#### Save Time By Simplifying Report Consolidation

Storage Administrators can save hours each month with off-the-shelf reports, including post-backup analysis reports and enterprise-level backup comparison reports. Reports can also be easily customized using a report wizard.

#### Expands and Scales to Meet Future Needs

Profiler for Backup Exec is a module of the Profiler Suite. Whether you purchase multiple backup vendors or wish to monitor your NAS, SAN or Direct Attached alongside backup data, the Profiler solution modules are integrated and scalable for easy deployment.

### Technical Specifications

#### Server Requirements

Sun Solaris  
Microsoft Windows 2000 Server or Professional  
Memory: 1 GB  
Disk Space: 1 GB  
Console: Internet Explorer, Netscape/Mozilla, Firefox

#### Support for:

VERITAS Backup Exec 8.x (Windows), 9.x & 10.x (Windows & NetWare)

#### Tek-Tools Software, Inc.

4020 McEwen Dr., Suite 105  
Dallas, TX 75244  
www.tek-tools.com

T: 1 888 835 8665

E: contact@tek-tools.com

Profiler is a trademark of Tek-Tools Software, Inc. All other trademarks in this document are the properties of their respective owners.