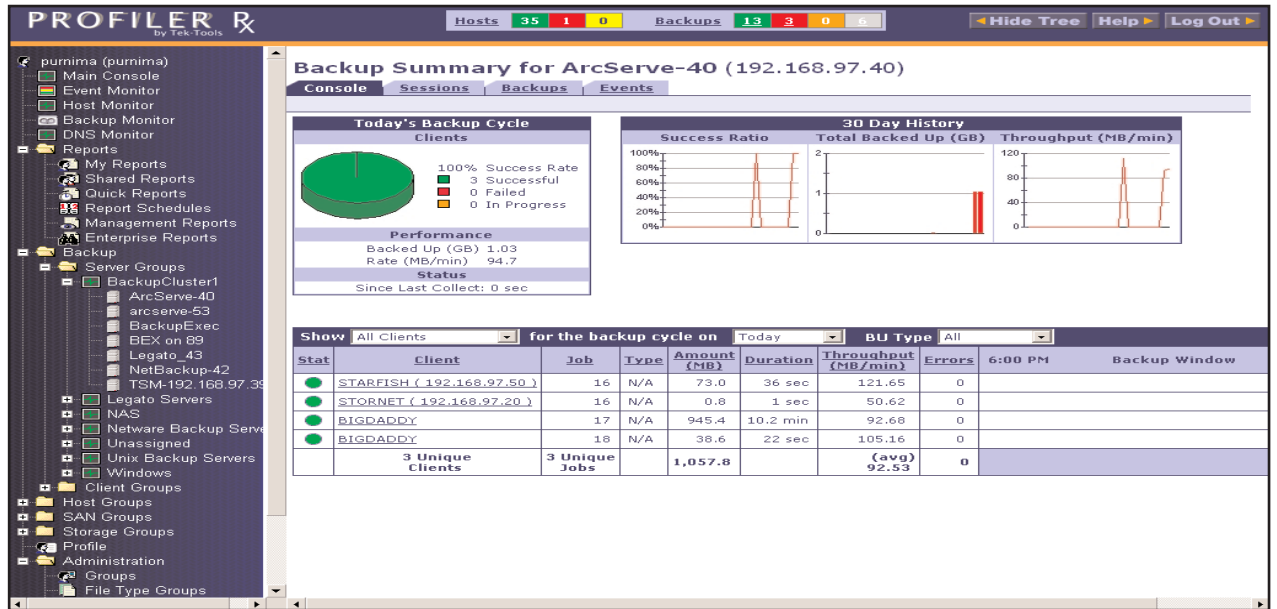


Profiler for CA Brightstor ARCserve

Simplified Reporting for Complicated Backup Environments



Profiler for CA Brightstor ARCserve offers backup summaries that allow the administrator to quickly verify that all backups were successful and to act quickly if a problem arises.

KEY REPORTS

- Successful backups report** - Summarizes successful full or incremental backups including host name, client name, save set name, backup level, volume name, size (mb), start time, end time, duration and throughput.
- Management reports** - Allows multiple managers to view and report daily that systems were backed up as well as identify and correct procedures for new systems or failed backup jobs.
- Backup window report** - Summarizes the status of the backups for all clients per ARCserve server and conveys how long backup jobs are taking.
- Exceptions report** - Allows administrators to proactively notify systems and users when there are backup failures; identifies patterns of failure when critical systems haven't been backed up systematically; and conveys files and file systems on each client that failed to be backed up.
- Completed backup summary report** - Summarizes all backup jobs over a specified period of time per ARCserve server. This report includes each job's start time and duration, the amount of data backed up, throughput rate, which clients were backed up and the completion status.
- Failed jobs report** - Provides information about failed backup jobs including host name, job start time, job ID, session ID, job elapsed time, job status (failed), session start time, session elapsed time, session data source and session target.

Centralized Web Console

Profiler for CA Brightstor ARCserve is a web-based backup reporting and analysis solution providing a consolidated, centralized view of all backups across one or multiple CA Brightstor ARCserve servers in relation to the entire storage network.

Real Time Monitoring Provides Quick, Accurate Data

Profiler for CA Brightstor ARCserve offers real time monitoring of all backup jobs as they progress through the backup window. Profiler for CA Brightstor ARCserve's enterprise-wide "Backup Console" provides storage managers with a quick and easy consolidated picture of all backups for a single day and summarizes the status of backups across the enterprise, including backup status, exceptions, size of backups and trending of backup size.

Save Time By Simplifying Report Consolidation

Storage Administrators can save hours each month with off-the-shelf reports, including post-backup analysis reports and enterprise-level backup comparison reports. Reports can also be easily customized using a report wizard.

Expands and Scales to Meet Future Needs

Profiler for CA Brightstor ARCserve is a module of the Profiler Rx Suite. Whether you purchase multiple backup vendors or wish to monitor your DAS, NAS and SAN alongside backup data, the Profiler Rx solution modules are integrated and scalable for easy deployment.

TECHNICAL SPECIFICATIONS

Server Requirements
 Sun Microsystems Solaris
 Microsoft Windows 2000 Server or Professional
 Memory Needed: 512 MB
 Disk Space: 1 GB
 Console: Internet Explorer or Netscape/Mozilla

Support for:
 CA Brightstor ARCserve 2000, 9 (Windows & NetWare)

For More Information

Tek-Tools, Inc.
 4020 McEwen Dr., Suite 105
 Dallas, TX 75244
 www.tek-tools.com

T: 1 888 835 8665
 E: contact@tek-tools.com

Profiler Rx is a trademark of Tek-Tools, Inc. All other trademarks in this document are the properties of their respective owners.