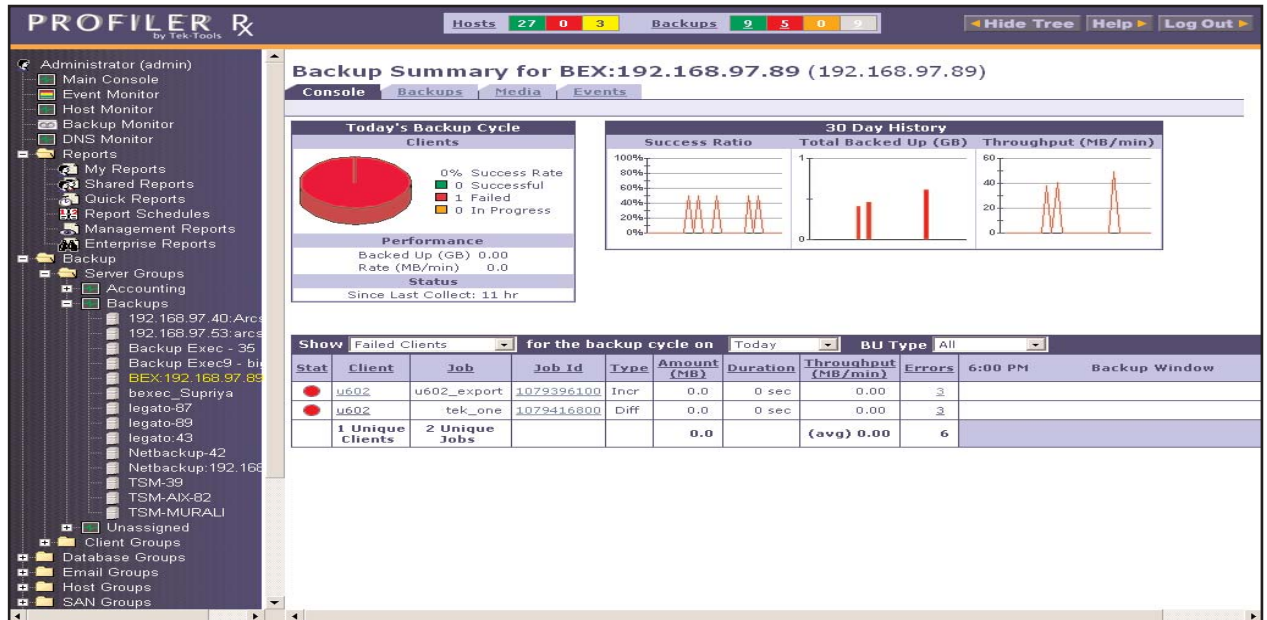


Profiler for Syncsort Backup Express

Simplified Reporting for Complicated Backup Environments



Profiler for Syncsort Backup Express offers simple reporting that allows administrators to quickly verify that all backups were successful and to act quickly if a problem arises.

KEY REPORTS

- Jobs report
- Offsite-to-onsite report
- Onsite report
- Onsite-to-offsite report
- Tape pool report
- Jobs to tape report
- Task summary report
- Exceptions report
- BEX waiting jobs report

Centralized Web-Based View

Profiler for Syncsort Backup Express offers backup administrators a consistent web-based view of their backup environment, alerting the administrator as to when and why a backup failed. Additionally, Profiler for Syncsort Backup Express' charts provide information that allows administrators to schedule backup clients within the backup window more effectively, meaning that the organization won't overload the backup server or spread out the backup load unnecessarily. Also, managers can quickly look at the success/failure ratios, giving them a quick evaluation of their backup environment performance.

Real Time Monitoring Provides Quick, Accurate Data

Profiler for Syncsort Backup Express offers real time monitoring of all backup jobs as they progress through the backup window. Profiler for Syncsort Backup Express's enterprise-wide "Backup Console" provides storage managers with a quick and easy consolidated picture of all backups for a single day and summarizes the status of backups across the enterprise, including backup status, exceptions, size of backups and trending of backup size.

Save Time By Simplifying Report Consolidation

Storage Administrators can save hours each month with off-the-shelf reports, including post-backup analysis reports and enterprise-level backup comparison reports. Reports can also be easily customized using a report wizard.

Expands and Scales to Meet Future Needs

Profiler for Syncsort Backup Express is a module of the Profiler Rx Suite. Whether you purchase multiple backup vendors or wish to monitor your DAS, NAS and SAN alongside backup data, the Profiler Rx solution modules are integrated and scalable for easy deployment.

TECHNICAL SPECIFICATIONS

Server Requirements

Sun Microsystems Solaris
 Microsoft Windows 2000 Server or Professional
 Memory Needed: 512 MB
 Disk Space Required: 1 GB
 Console: Internet Explorer or Netscape/Mozilla

Support for:

Syncsort Backup Express 2.14 & 2.15 B, C, D (Windows, Solaris, Linux, Tru64)

For More Information

Tek-Tools, Inc.
 4020 McEwen Dr., Suite 105
 Dallas, TX 75244
www.tek-tools.com

T: 1 888 835 8665
 E: contact@tek-tools.com

Profiler Rx is a trademark of Tek-Tools, Inc. All other trademarks in this document are the properties of their respective owners.