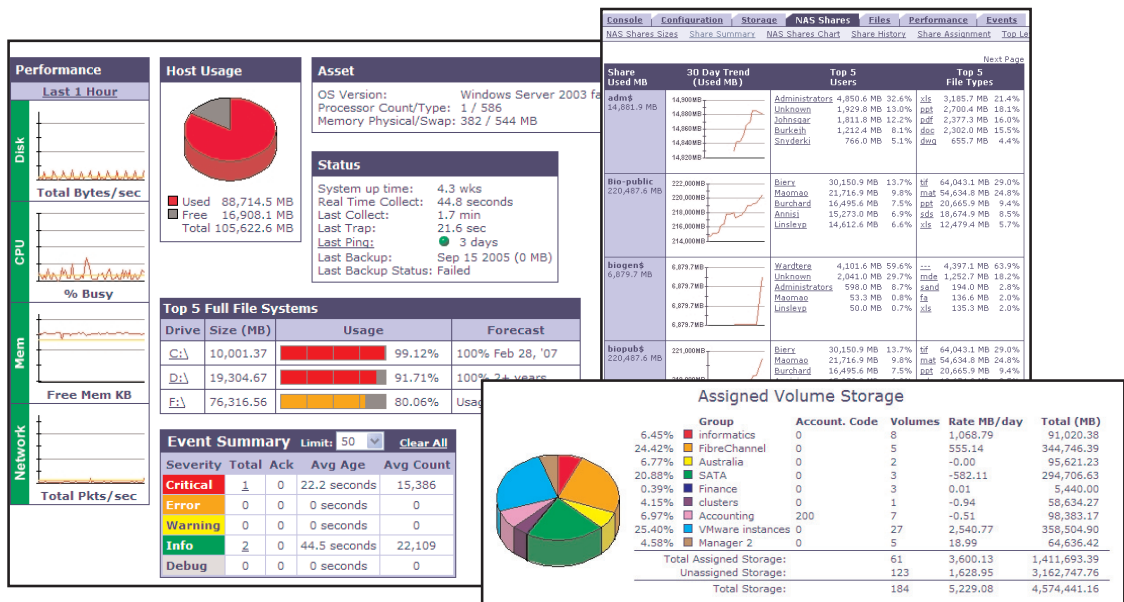


Storage Profiler

NAS Module: Interrogate Your Data



A simple, clear, and accurate tool for optimizing your network attached storage.

KEY FEATURES

Automated Storage Capacity Trending & Forecasting

- Business Grouping by share
- NAS Share (CIFS, NFS) trends

Automated SRM (File Analysis) Functions

- Policy-based file detection
- File dist. by type, owner, age, last modified/accessed
- Duplicate and orphaned file detection
- File age, owner, size by business unit
- Directory Analysis

Policy-Based ILM

- Move, Copy, Delete, Archive
- Based on configurable policies

Automated Configuration Discovery

- CIFS and NFS Share configuration discovery

Automated Performance Capacity Trending

- Host-level performance counter trends
- Protocol-level performance trends
- LUN & iSCSI Performance

Automated Report Generation & Delivery

- Over 100 "off-the-shelf" reports
- Quick & easy control of custom report generation
- Detailed and configurable report delivery mechanism
- HTML/CVS/Publish

Server/Host Agents (Linux, Unix, Windows)

- Disk I/O
- Network
- CPU
- Memory
- iSCSI
- HBA

With highly customizable views and powerful, automated reporting, Profiler gets the right data into the right hands throughout your organization.

"With Profiler, we analyzed over 100 filers to identify 11 TB worth of PST, MP3, & TMP files. Profiler then deleted these files saving us over \$100,000 in storage.

We also used Profiler to identify underutilized hosts based on performance, allowing us to further save with consolidation."

-Storage Administrator, Fortune 500 Financial

Whether you are invested in a single filer or in hundreds, the simplicity and scalability of Profiler's thin-client technology is fundamental to realizing the most efficient TCO for your agami investments. Offering enhanced file analysis, location independent monitoring, extensive object trending, and powerful reporting tools, Profiler distills the details of storage management down to a clear and palatable size.

With clarity comes control.

Technical Specifications

Server Requirements

Sun Solaris
Microsoft Windows 2000/2003 Server or Professional
Memory: 1 GB
Disk Space: 1 GB
Console: Internet Explorer, Netscape/Mozilla, Firefox

Support For:

Network Attached Storage Devices

For More Information

Tek-Tools Software, Inc.
4040 McEwen Dr., Suite 240
Dallas, TX 75244
www.tek-tools.com

T: 1 888 835 8665
E: contact@tek-tools.com