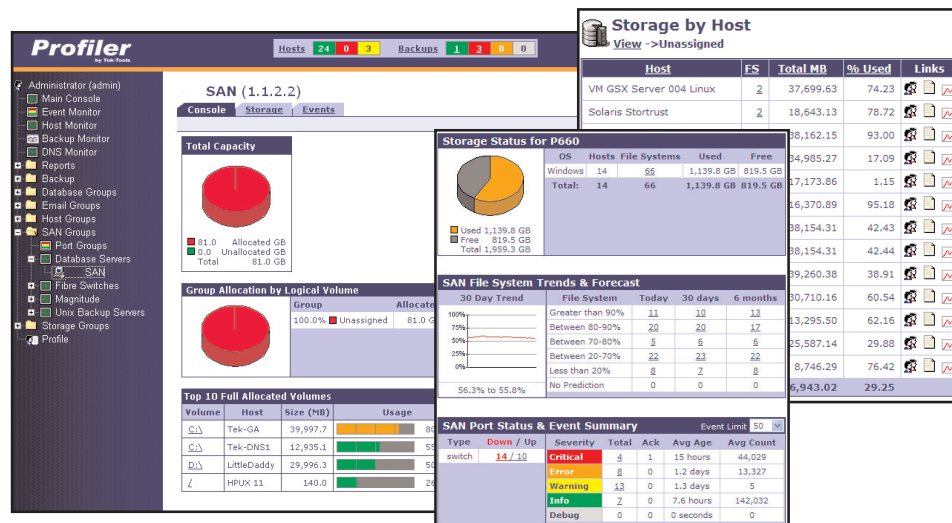


StorageProfiler

SAN Module: Interrogate Your Data



A simple, clear, and accurate tool for optimizing your storage performance.

KEY FEATURES

Automated Storage Capacity Trending & Forecasting

- Business Grouping by share

Automated SRM (File Analysis) Functions

- Policy-based file detection
- File distribution by type, owner, age, last modified/accessed
- Duplicate and orphaned file detection
- File age, owner, size by business unit
- Directory Analysis

Policy-Based ILM

- Move, Copy, Delete, Archive
- Based on configurable policies

Automated Report Generation & Delivery

- Over 100 "off-the-shelf" reports
- Quick & easy control of custom report generation
- Detailed and configurable report delivery mechanism
- HTML/CVS/Publish

Server/Host Agents (Linux, Unix, Windows)

- Disk I/O
- Network
- CPU
- Memory
- iSCSI
- HBA

Additional Features

- Fibre Channel Switch Monitoring and Reporting
- HBA Reporting and Monitoring
- Host-Based Storage Usage
- File Analysis and Data Classification
- Threshold Alerting Based on Volume Usage

Light weight ILM

Custom Grouping

StorageProfiler is the only intuitive web-based application that unifies reporting, monitoring, and notification across the entire storage stack. Profiler's SAN module provides information about file systems on the SAN and their space allocation both in real time and historically. Customers get a view of the files sitting on an array via Profiler's grouping features that stores files by array in a virtual container.

"Profiler has allowed us to centralize our data management and protection practices, and thereby improving data availability and application performance.

We've saved considerable time and money with Profiler and have improved security and efficiency."
-IT Director, Fortune 500 Energy Company

Real-time and historical reporting and monitoring enables organizations to proactively manage storage, forecast growth, and avoid costly outages and poor application performance. StorageProfiler for SANs supports multiple SAN arrays, heterogeneous platforms, and mission-critical applications such as SQL, Oracle, and Exchange. This intuitive application allows all levels of management to customize the view to meet their particular business need. Custom grouping of assets, arrays, hosts, and file systems creates a unique interface that maps technology to business structure for charge-back, capacity planning, and process automation.

Technical Specifications

Server Requirements

Sun Solaris
Microsoft Windows 2000/2003 Server or Professional
Linux
Memory: 1 GB
Disk Space: 1 GB
Console: Internet Explorer, Netscape/Mozilla, Firefox

Support For:
SAN Storage Arrays

For More Information

Tek-Tools Software, Inc.
4040 McEwen Dr., Suite 240
Dallas, TX 75244
www.tek-tools.com

T: 1 888 835 8665
E: contact@tek-tools.com