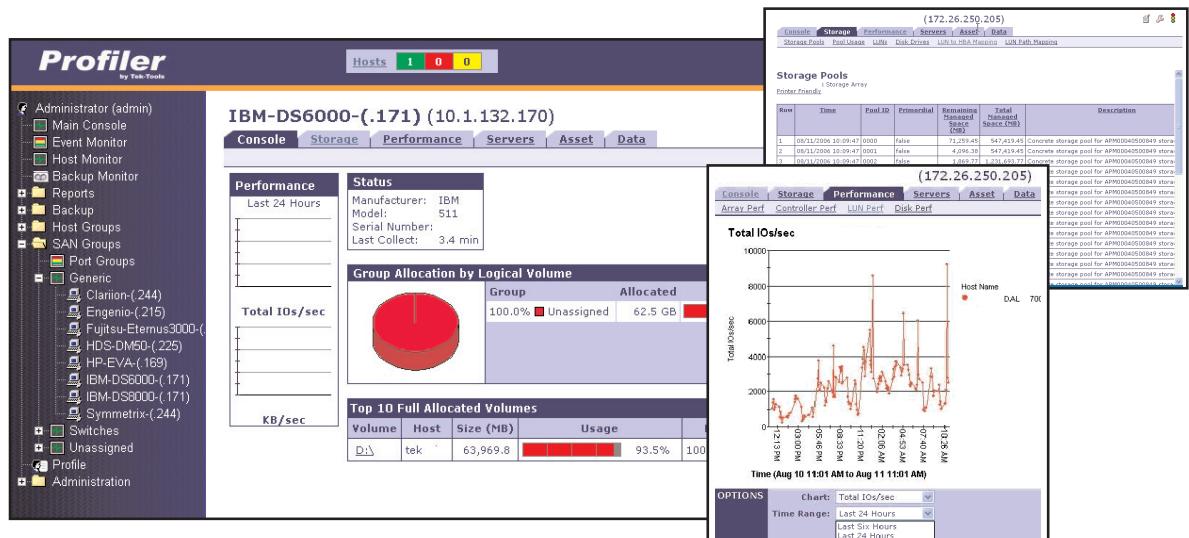


# StorageProfiler

## IBM DS/ESS Module: Interrogate Your Data



A simple, clear, and accurate tool for optimizing your IBM DS/ESS investment.

### KEY FEATURES

#### OVERVIEW OF DISK DRIVES ON THE IBM DS/ESS ARRAY

- Sizes
- Model & Manufacturer
- Operational Status

#### BASIC STORAGE POOLS OR RAID GROUP ASSETS

- Models Each Storage Pool or RAID group
- Depicts Pool Size, Remaining Space, & RAID Type

#### ADVANCED STORAGE POOL ASSETS

- Each Storage Pool
- Number of LUNs
- Space Consumed
- Pool Remaining Managed & Total Managed Space

#### BASIC LUN ASSETS

- Overview of Size of LUNs
- RAID Type
- Associated Storage Pool ID

#### BASIC LUN PATH MAPPING

- Map From a Bound LUN to its FC HBA Port

#### ADVANCED LUN PATH MAPPING

- Map LUN From Storage Processor to Host Initiator Port
- Depicts End-to-End Path from LUN to Host

#### ARRAY, CONTROLLER, LUN, & DISK STATISTICS

- Read, Write, & Total I/Os
- Kbytes Read, Written, & Transferred

#### AUTOMATED REPORT GENERATION & DELIVERY

- Over Fifty "Off-the-Shelf" Reports
- Quick & Easy Control of Custom Report Generation
- Detailed and Configurable Report Delivery Mechanism

#### ADDITIONAL FEATURES

- Fibre Channel Switch Monitoring and Reporting
- HBA Reporting and Monitoring
- Host-Based Storage Usage
- File Analysis and Data Classification
- Threshold Alerting Based on Volume Usage

#### LIGHT WEIGHT ILM

#### CUSTOM GROUPING

StorageProfiler is the only intuitive web-based application that unifies reporting, monitoring, and notification across the entire storage stack. Profiler's IBM DS/ESS module discovers logical and physical attributes and mappings based on IBM's SMI-S provider implementation, giving Profiler the capability to report on IBM's asset information, connectivity (LUNs and Ports), and capacity (physical disks, volumes, and storage pools) both in real time and historically.

**"Profiler has enabled us to actually be proactive in managing our SAN infrastructure. We now have a handle on storage utilization, usage patterns, and performance."**

**-SAN Administrator, Fortune 500 Retailer**

Real-Time and historical reporting and monitoring enables organizations to proactively manage storage, forecast growth, and avoid costly outages and poor application performance. StorageProfiler for IBM DS/ESS supports multiple DS/ESS arrays, heterogeneous platforms, and mission critical applications such as SQL, Oracle, and Exchange. This intuitive application allows all levels of management to customize the view to meet their particular business need. Custom grouping of assets, arrays, hosts and file systems create a unique interface that maps technology to business structure for charge-back, capacity planning, and process automation.

### Technical Specifications

#### Server Requirements

Sun Solaris  
Microsoft Windows 2000/2003 Server or Professional  
Linux  
Memory: 1 GB  
Disk Space: 1 GB  
Console: Internet Explorer, Netscape/Mozilla, Firefox

IBM SMI-S Provider

#### Support For:

IBM DS/ESS Storage Arrays  
DS6800, DS4300, DS4400, DS4800, EXP, DS8100, DS4700,  
DS8300, ESS 2105-800

### For More Information

Tek-Tools Software, Inc.  
4040 McEwen Dr., Suite 240  
Dallas, TX 75244  
www.tek-tools.com

T: 1 888 835 8665  
E: contact@tek-tools.com