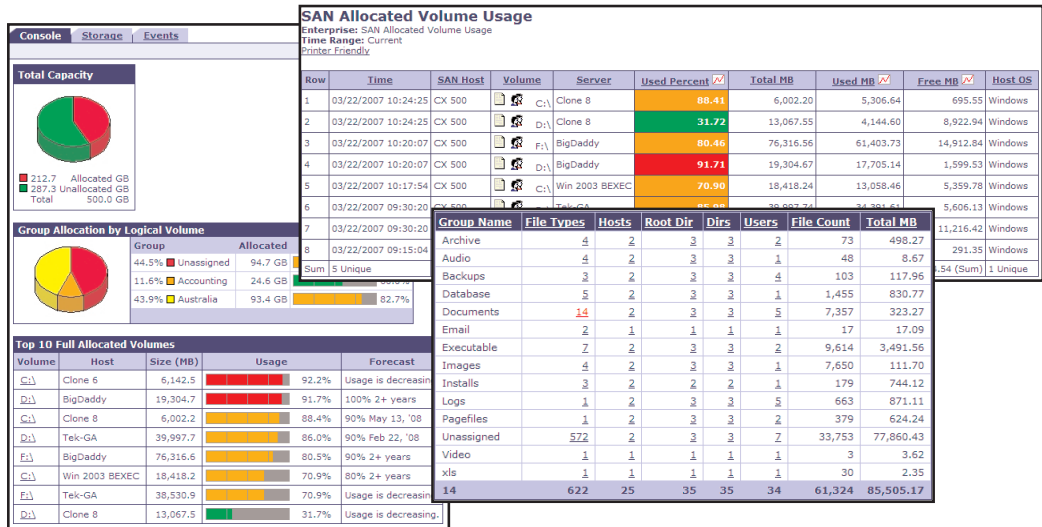


StorageProfiler

Sun StorageTek Module: Interrogate Your Data



A simple, clear, and accurate tool for optimizing your Sun StorageTek investment.

KEY FEATURES

OVERVIEW OF DISK DRIVES ON THE SUN STORAGE TEK ARRAY

- Sizes
- Model & Manufacturer
- Operational Status

BASIC STORAGE POOLS OR RAID GROUP ASSETS

- Models Each Storage Pool or RAID group
- Depicts Pool Size, Remaining Space, & RAID Type

ADVANCED STORAGE POOL ASSETS

- Each Storage Pool
- Number of LUNs
- Space Consumed
- Pool Remaining Managed & Total Managed Space

BASIC LUN ASSETS

- Overview of Size of LUNs
- RAID Type
- Associated Storage Pool ID

BASIC LUN PATH MAPPING

- Map From a Bound LUN to its FC HBA Port

ADVANCED LUN PATH MAPPING

- Map LUN From Storage Processor to Host Initiator Port
- Depicts End-to-End Path from LUN to Host

ARRAY & LUN STATISTICS

- Read, Write, & Total I/Os
- Kbytes Read, Written, & Transferred

AUTOMATED REPORT GENERATION & DELIVERY

- Over Fifty "Off-the-Shelf" Reports
- Quick & Easy Control of Custom Report Generation
- Detailed and Configurable Report Delivery Mechanism

ADDITIONAL FEATURES

- Fibre Channel Switch Monitoring and Reporting
- HBA Reporting and Monitoring
- Host-Based Storage Usage
- File Analysis and Data Classification
- Threshold Alerting Based on Volume Usage

LIGHT WEIGHT ILM

CUSTOM GROUPING

StorageProfiler is the only intuitive web-based application that unifies reporting, monitoring, and notification across the entire storage stack. Profiler's Sun StorageTek module discovers logical and physical attributes and mappings based on Sun StorageTek's SMI-S provider implementation, giving Profiler the capability to report on Sun StorageTek's asset information, connectivity (LUNs and Ports), and capacity (physical disks, volumes, and storage pools) both in real time and historically.

"Profiler has allowed us to centralize our data management and protection practices, and thereby improving data availability and application performance.

We've saved considerable time and money with Profiler and have improved security and efficiency."

-IT Director, Fortune 500 Energy Company

Real-time and historical reporting and monitoring enables organizations to proactively manage storage, forecast growth, and avoid costly outages and poor application performance. StorageProfiler for Sun StorageTek supports multiple Sun StorageTek arrays, heterogeneous platforms, and mission critical applications such as SQL, Oracle, and Exchange. This intuitive application allows all levels of management to customize the view to meet their particular business need. Custom grouping of assets, arrays, hosts and file systems create a unique interface that maps technology to business structure for charge-back, capacity planning, and process automation.

Technical Specifications

Server Requirements

Sun Solaris
 Microsoft Windows 2000/2003 Server or Professional
 Linux
 Memory: 1 GB
 Disk Space: 1 GB
 Console: Internet Explorer, Netscape/Mozilla, Firefox
 Engenio SMI-S Provider

Support For:

Sun StorageTek Storage Systems
 3320, 3120, 9970, 3510, Flex600, 3511, 9985, 6920, 6140, 6130, Flex 240, Flex 280, Flex 380, Flex 640, 9980, 6540, Flex 680, 9990

For More Information

Tek-Tools Software, Inc.
 4040 McEwen Dr., Suite 240
 Dallas, TX 75244
 www.tek-tools.com

T: 1 888 835 8665
 E: contact@tek-tools.com