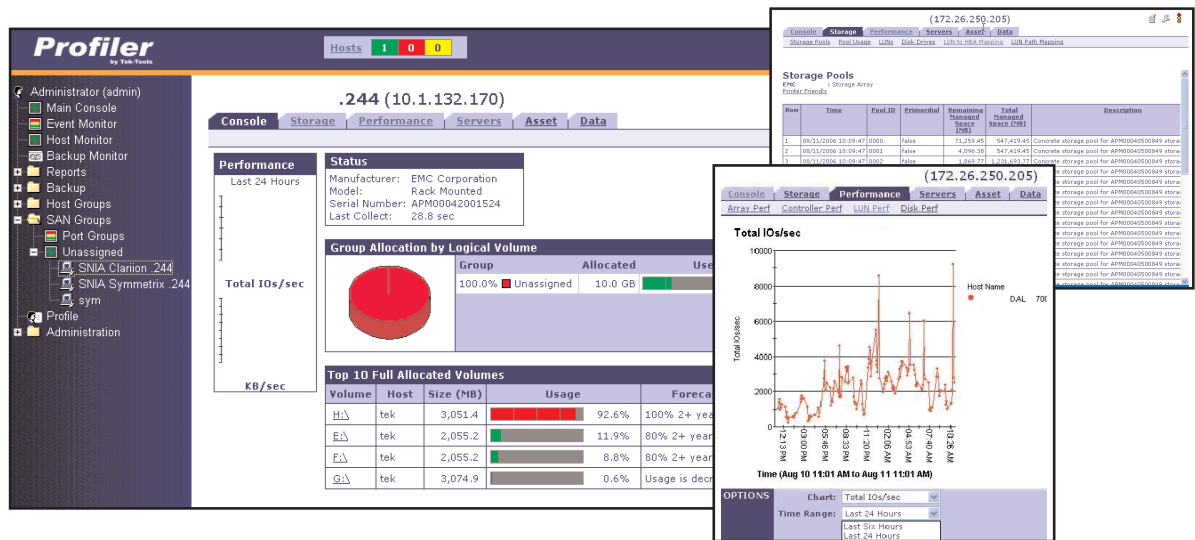


StorageProfiler

EMC Symmetrix DMX: Interrogate Your Data



A simple, clear, and accurate tool for optimizing your Symmetrix DMX performance.

KEY FEATURES

OVERVIEW OF DISK DRIVES ON THE SYMMETRIX DMX ARRAY

- Sizes
- Model & Manufacturer
- Operational Status

BASIC STORAGE POOLS OR RAID GROUP ASSETS

- Models Each Storage Pool or RAID group
- Depicts Pool Size, Remaining Space, & RAID Type

ADVANCED STORAGE POOL ASSETS

- Each Storage Pool
- Number of LUNs
- Space Consumed
- Pool Remaining Managed & Total Managed Space

BASIC LUN ASSETS

- Overview of Size of LUNs
- RAID Type
- Associated Storage Pool ID

BASIC LUN PATH MAPPING

- Map From a Bound LUN to its FC HBA Port

ADVANCED LUN PATH MAPPING

- Map LUN From Storage Processor to Host Initiator Port
- Depicts End-to-End Path from LUN to Host

ARRAY, CONTROLLER, LUN, & DISK STATISTICS

- Read, Write, & Total I/Os
- Kbytes Read, Written, & Transferred

AUTOMATED REPORT GENERATION & DELIVERY

- Over Fifty "Off-the-Shelf" Reports
- Quick & Easy Control of Custom Report Generation
- Detailed and Configurable Report Delivery Mechanism

ADDITIONAL FEATURES

- Fibre Channel Switch Monitoring and Reporting
- HBA Reporting and Monitoring
- Host-Based Storage Usage
- File Analysis and Data Classification
- Threshold Alerting Based on Volume Usage

LIGHT WEIGHT ILM

CUSTOM GROUPING

StorageProfiler is the only intuitive web-based application that unifies reporting, monitoring, and notification across the entire storage stack. Profiler's Symmetrix DMX module discovers logical and physical attributes and mappings based on EMC's SMI-S provider implementation, giving Profiler the capability to report on Symmetrix asset information, connectivity (LUNs and Ports), and capacity (physical disks, volumes, and storage pools) both in real time and historically.

"Profiler simplified our SAN management by automating many of the manual processes we had been using. We're saving time and gaining accuracy in an easier and less expensive way than competing SAN management tools."

-SAN Administrator, Fortune 500 Financial Firm

Real-Time and historical reporting and monitoring enables organizations to proactively manage storage, forecast growth, and avoid costly outages and poor application performance. StorageProfiler for Symmetrix DMX supports multiple DMX arrays, heterogeneous platforms, and mission critical applications such as SQL, Oracle, and Exchange. This intuitive application allows all levels of management to customize the view to meet their particular business need. Custom grouping of assets, arrays, hosts and file systems creates a unique interface that maps technology to business structure for charge-back, capacity planning, and process automation.

Technical Specifications

Server Requirements

Sun Solaris
Microsoft Windows 2000/2003 Server or Professional
Linux
Memory: 1 GB
Disk Space: 1 GB
Console: Internet Explorer, Netscape/Mozilla, Firefox

EMC SMI-S Solution Enabler Provider 6.2.1 or greater

Support For:

EMC Symmetrix DMX Storage Arrays
DMX800, DMX1000, DMX3, DMX2000, All Symmetrix Models

For More Information

Tek-Tools Software, Inc.
4040 McEwen Dr., Suite 240
Dallas, TX 75244
www.tek-tools.com

T: 1 888 835 8665
E: contact@tek-tools.com