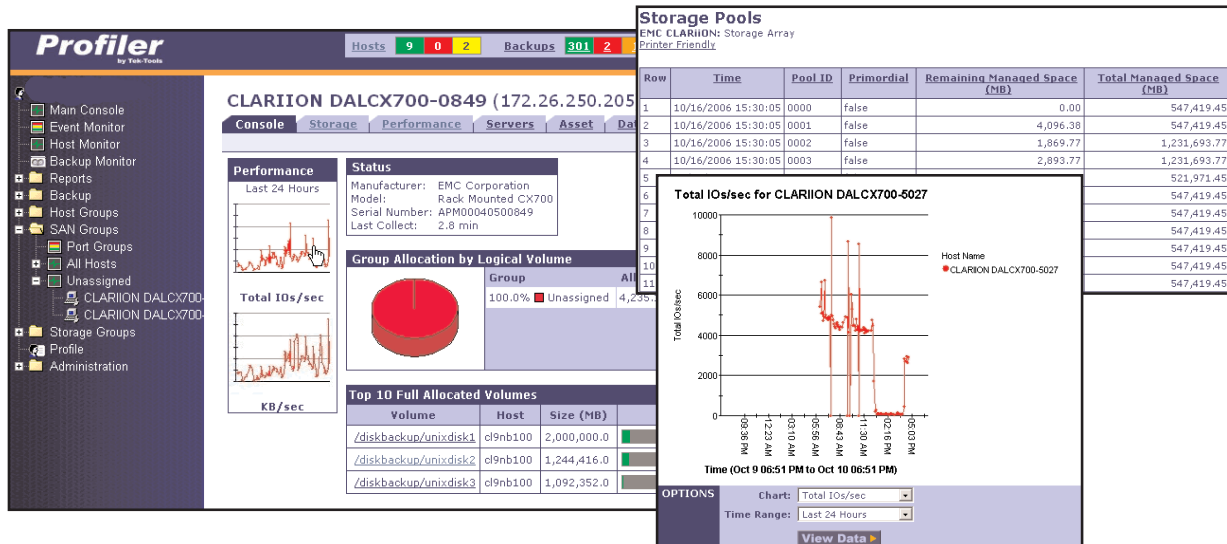


StorageProfiler

Clariion Module: Interrogate Your Data



A simple, clear, and accurate tool for optimizing your Clariion performance.

KEY FEATURES

OVERVIEW OF DISK DRIVES ON THE CLARIION

- Sizes
- Model & Manufacturer
- Operational Status

BASIC STORAGE POOLS OR RAID GROUP ASSETS

- Models Each Storage Pool or RAID group
- Depicts Pool Size, Remaining Space, & RAID Type

ADVANCED STORAGE POOL ASSETS

- Each Storage Pool
- Number of LUNs
- Space Consumed
- Pool Remaining Managed & Total Managed Space

BASIC LUN ASSETS

- Overview of Size of LUNs
- RAID Type
- Associated Storage Pool ID

BASIC LUN PATH MAPPING

- Map From a Bound LUN to its FC HBA Port

ADVANCED LUN PATH MAPPING

- Map LUN From Storage Processor to Host Initiator Port
- Depicts End-to-End Path from LUN to Host

ARRAY, CONTROLLER, LUN, & DISK STATISTICS

- Read, Write, & Total I/Os
- Kbytes Read, Written, & Transferred

AUTOMATED REPORT GENERATION & DELIVERY

- Over Fifty "Off-the-Shelf" Reports
- Quick & Easy Control of Custom Report Generation
- Detailed and Configurable Report Delivery Mechanism

ADDITIONAL FEATURES

- Fibre Channel Switch Monitoring and Reporting
- HBA Reporting and Monitoring
- Host-Based Storage Usage
- File Analysis and Data Classification
- Threshold Alerting Based on Volume Usage

StorageProfiler is the only intuitive web-based application that unifies reporting, monitoring, and notification across the entire storage stack. Profiler's Clariion module discovers logical and physical attributes and mappings based on EMC's V1.1 SMI-S provider implementation, giving Profiler the capability to report on Clariion's asset information, connectivity (LUNs and Ports), and capacity (physical disks, volumes, and storage pools) both in real time and historically.

"With Profiler, we simplified our entire SAN management process by eliminating the manual creation of spreadsheets for LUN association.

Not only do we save time and gain accuracy, Profiler was easier to deploy and cost less than competing SAN management tools for significant savings."

-SAN Administrator, Fortune 500 Home Builder

Real-Time and historical reporting and monitoring enables organizations to proactively manage storage, forecast growth, and avoid costly outages and poor application performance. StorageProfiler for Clariion supports multiple Clariion arrays, heterogeneous platforms, and mission critical applications such as SQL, Oracle, and Exchange. This intuitive application allows all levels of management to customize the view to meet their particular business need. Custom grouping of assets, arrays, hosts and file systems create a unique interface that maps technology to business structure for charge-back, capacity planning, and process automation.

Technical Specifications

Server Requirements

Sun Solaris
Microsoft Windows 2000/2003 Server or Professional
Linux
Memory: 1 GB
Disk Space: 1 GB
Console: Internet Explorer, Netscape/Mozilla, Firefox
EMC SMI-S Solution Enabler 6.2.1 Provider

Support For:

EMC/Dell Clariion Storage Arrays
AX100, AX100i, AX150, AX150i, AX200, CX200, CX300, CX300i, CX400, CX500, CX500i, CX600, CX3-20, CX3-20c, CX3-20f, CX3-40, CX3-40c, CX3-40f, CX700, CX3-80

For More Information

Tek-Tools Software, Inc.
4040 McEwen Dr., Suite 240
Dallas, TX 75244
www.tek-tools.com

T: 1 888 835 8665
E: contact@tek-tools.com